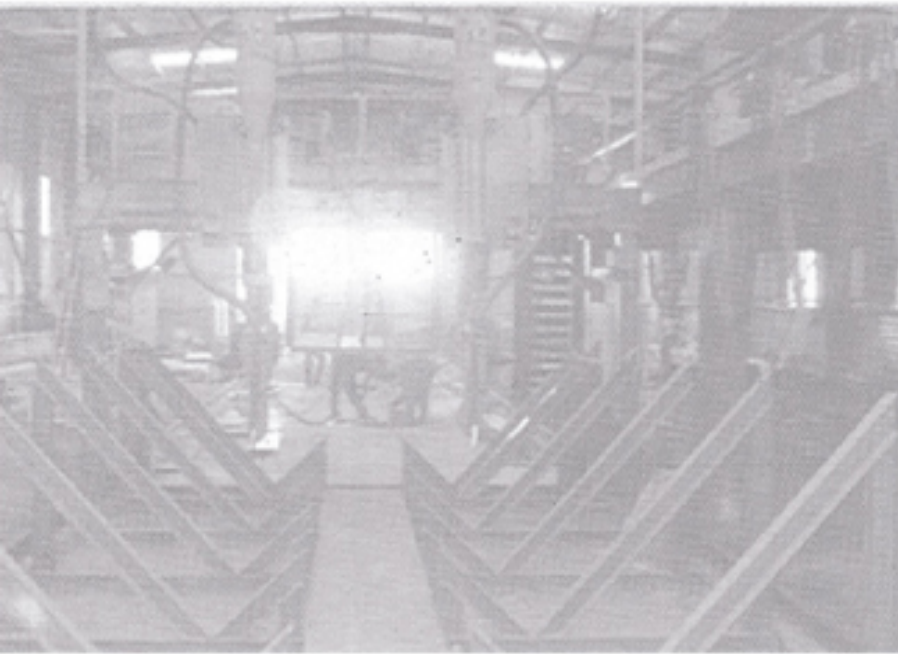


QUALITY & RELIABILITY YOU CAN DEPEND ON...



Let's Build Your Structure With Right AXIS...



MESSAGE FROM MANAGEMENT . . .

AXIS TECH is an Engineering firm based on consultancy and construction of Pre- Engineering steel structure, Civil, Architectural and Electrical engineering works and services. We provide different type of consultancy and construction services, like Industries, Commercial Complex, Residential and Academic building as per national and international standard and technologies. Our technical experts are blessed with global expertise.

Thanking you for interest in Pre- Engineered (PEB) as the exclusive product in Bangladesh. *AXIS TECH* formally known as a growing supplier and fabricator of Pre- Engineered building (PEB) products with proper design and engineering support. It has made it's mark on structural steel markets through it's reputation for quality and reliabilities. The company has good factory facilities at Fulbaria, Savar, with good support of Steel Building fabrication.

We are committed to meet out clients need in the most efficient manner. We pledge to use our resources to quality and effectively solve our clients problem and indentify growth opportunities that beneficial to all stakeholders.

With the promise of excellence in services, we look for work to a logo and satisfactory relation to you.

Your sincerely,

Axis's Color Panel is highly corrosion resistant Pre-Pointed steel sheet used in steel structural constructions. These are metallic coated Steel Panels used for Roofing, Cladding & False Ceiling in industrial, commercial or residential applications as well as in architectural appearances such as swimming pool, Fuel Pumps, indoor stadium and other sporting complexes, Air hanger, Pedestal over bridge and underpass filling or railway station etc.

Axis's Color Panels are rolled out in single skin trapezoidal shape by roll forming line maintaining proper design solution and optimization between extra stiffness and materials consumption. Sheets are custom roll-formed to suit given site measurements to a maximum length of 12m (appx. 40'-0"). Depending on site accessibility for delivery, sheet length between 12m and 21m require special transportation.

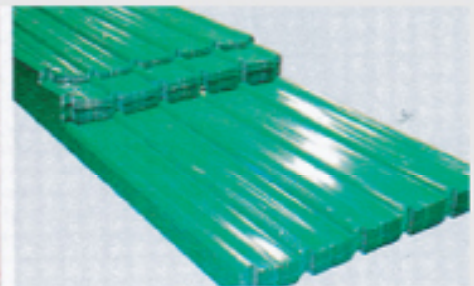
Tolerance: Length ± 5 mm, Cover Width ± 4 mm and Rib Height ± 1 mm.



PANEL-205



ROOF TILES -202



PANEL-190

Base Steel	Cold Rolled Steel (0.42mm BMT)
Standard	As 1397-1993 Grade 80 (G550)
Yield Strength	500 MPa
Pre-Treatment	Proprietary Corrosion Converting Coating
Substrate	Aluminium-Zinc Alloy Coating AZ-150(150g/m ²) or depending on the product. Aluminium (55%), Zinc(43.4%) & Silicon (1.6%) are Solidified at 600°C high temperature. The whole structure is a quaternary Al-Fe-Si-Zn which becomes a protection layer on the Steel sheet hence preventing the penetration of corrosive factors on Steel.
Paint System	Primer Coating-Epoxy Primer Finish Coating-Polyvinylidene Fluoride (PVDF)
Profile	Single Skin Trapezoidal
Fastener	#12-16x 50mm, Hex-Head Self-Drilling or Self-Tapping Screw depending on support thickness.

CEE SECTION

Axis's Cee Section is suitable for any construction in which the spans are simple supported. Typical applications are single bay building, recessed roofs or walls, tower structures, end walls & building with odd shaped ground plans. Where purlins of sufficient length are available. Cee section may also be used continuously over two or more spans to reduce deflection.

CAPACITY

Thickness : 1.2mm-2.0mm (18 gauge ~14 gauge)
 Length : 0.6m [2'-0"] ~15.0m [50'-0"]

ZED SECTION

Axis's Zed Section are suitable for multi-bay building which produces a structurally continuous line of purlins or girts throughout the length of the building. Structural continuity results in better economy but lapping provides two thicknesses of material over interior supports, increasing the strength of the section where bending moments are critical & improving the load capacity & rigidity of the systems.

CAPACITY

Thickness : 1.2mm-3.0mm [18 gauge ~12 gauge]
 Length : 0.6m [2'-0"] ~15.0m [50'-0"]

TOLERANCE

The following tolerances apply to ZONE'S Cee & Zed Section

Depth ± 1 mm
 Flange width ± 2 mm
 Overall length ± 5 mm
 Hole Center ± 1.5 mm

¹Camber : up to 1 in 500 depending on length.

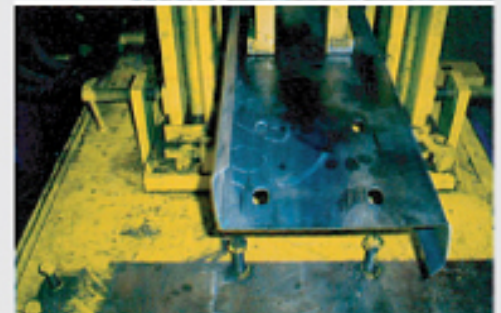
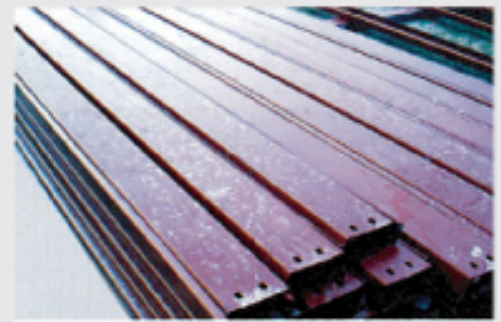
²Bow : up to 1 in 250 depending on length.

¹Camber is the variation from straightness in the plane of the web.

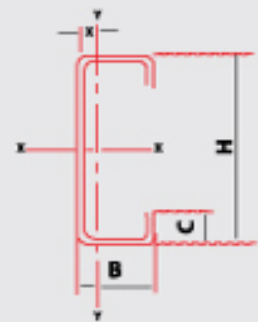
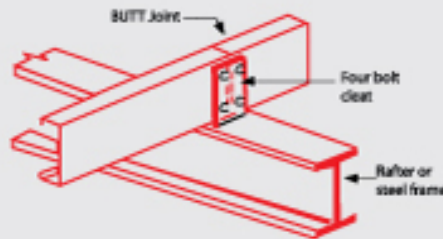
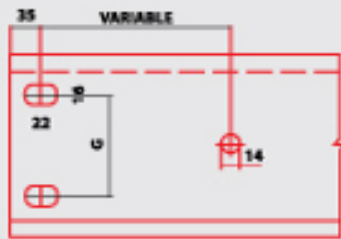
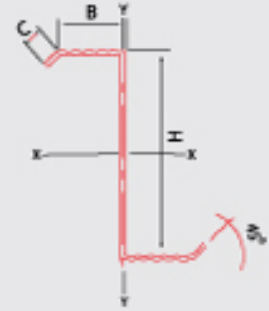
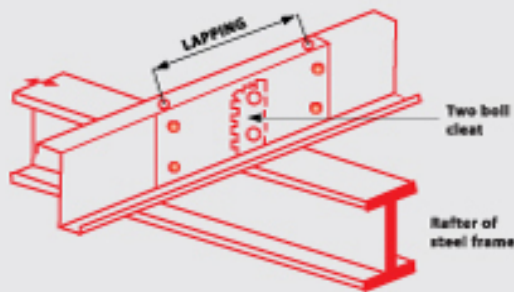
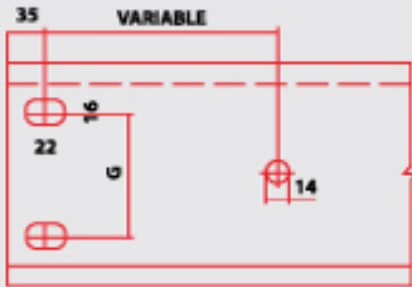
²Bow is the variation from straightness in the plane perpendicular to the web.

CEE & ZED Sections used as purlins or girts in three structural configuration.

- As simple spans for both Cee & Zed Section.
- As double spans for both Cee & Zed Sections continuous over the centre support.
- As continuous spans limited to Zed section lapped over each internal support.



Base Steel	Cold Rolled Steel
Standard	ASTM A 607 Grade 50
Yield Strength	345 MPa
Tensile Strength	450 MPa
Substrate	The metal coating varies from Z-200 (200g/m ²) to Z-450 (450g/m ²)



Axis's H-Beam Section usually a 'H' Shape made from individual flat plates welded together. Structural Steel Members are load carrying Member usually use for primary frame structure.

The built up H-Beam section for steel structure adds a new dimension to your project or applications. It is efficient light weight and economical to your project because of its limitless size (HxB) and length. The designer can design the beam with a wide range of flexibilities of its flange and web thickness and width.

The production line of common H type steel is made up of some main equipment such as Multiple tip gas cutting or shear cutting machine. H-Beam Assembling machine the gantry submerged Arc welding machine, straightening machine and shot blasting machine etc. The non-destruction welding test of the section is tested by radiographic technique under ANSI/AWS D1.1-98 standard.

Parameter		Min. -mm	Max. -mm
Flange	Width (B)	100	600
	Thickness (t)	6	40
Web	Height (H)	100	1500
	Thickness (tw)	4.5	32

TOLERANCE
 Length $\pm 10\text{mm}$
 Width $\pm 3\text{mm}$
 Depth $\pm 5\text{mm}$

Length 12.0m (appx.40'-0") Depending on site accessibility for delivery. Beam lengths between 12.0m and 21.0m require special transport.

- ¹**Camber** : up to 1 in 500 depending on length.
- ²**Bow** : up to 1 in 250 depending on length.

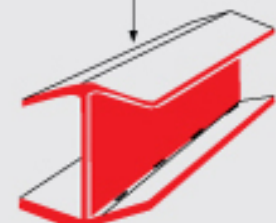
¹Camber is the variation from straightness in the plane of the web.
²Bow is the variation from straightness in the plane perpendicular to the web.



Hot Rolled Strip
(By Gas Cutting or Shear Cutting)



H-beam Assembling
(By Auto Spot Welding)



H-beam Fabrication straightening
(By submerge arc welding)



H-beam Flange
(By hydraulic straightening)

A Reputation for Quality and Reliability: For most people the decision to proceed with a 'build' project is a very important one and the choice of builder is crucial. Whether you need a simple porch, a garage, a two-storey extension, a major renovation, or construct a new building you need to choose your builder wisely.

Why AXIS TECH? Established for nearly 05 years by AXIS TECH, AXIS TECH Building Contractor has built a reputation for outstanding quality, reliability and personal service. We have completed lot of construction projects for a wide range of satisfied customers. From initial planning and design, though to completion, Bill and his team complete each project to the highest industry standards. You can be assured that we combine the all-important organisational and communication skills which are vital to the smooth running of each building project.

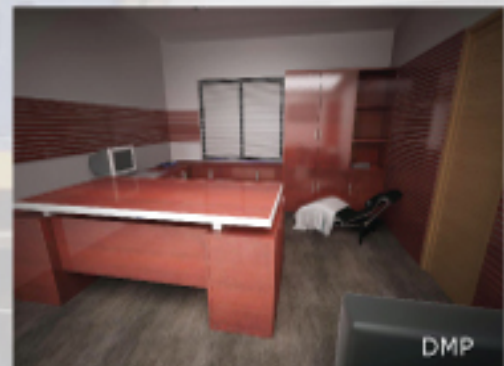
Personal Recommendation: For most businesses personal recommendation is a powerful advertisement and AXIS TECH is no exception. We feature just a few of testimonials in this brochure received from satisfied customers which endorse our claims. We hope this brochure provides you with a comprehensive guide to the quality and variety of our work, helping you make the right choice for your construction project.

Planning & Design: Attention to detail and communication are essential to ensure the smooth running of any construction project, large or small. AXIS TECH can advise and guide you through every stage of the process. Our architects and designers are on-hand to provide drawings and building plans for all kind of RCC & Pre-engineered steel structure. Firstly we carry out a measured survey of the project site. This is followed by our providing you with a proposal, before moving to the planning and construction control stage. Once you are completely happy with our proposal, we will submit detailed plans to the local authorities.

A Complete Range of Building and Ancillary Services: These are just a few examples of the projects we have completed, yet we offer a wide range of services.

Architectural Planning & Design:

- ✓ Layout Plan
- ✓ Master Plan
- ✓ Architectural Planning
- ✓ Interior Design



Structural Design:

Design of Residential, Academic, Commercial, Industrial, Hotel Building, Ware house & All kind of Steel & R.C.C Structure, According to ACI, BNBC, AASHTO, and AISC Codes.

Project Supervision:

- ✓ Detail full time supervision work by engaging degree Engineer/ Architect or diploma Engineer
- ✓ Top supervision by Chief Structural Engineer/ Architect. (Time to time as per wanting of client)

Tern key Industrial Project:

We are providing Architectural, Structural & other Utility Planning & Design with Construction works of deferent Project such as Dyeing Industry, Garments Building, Sweater Factory, Residential Building & Commercial Complex.

Quality & Reliability:

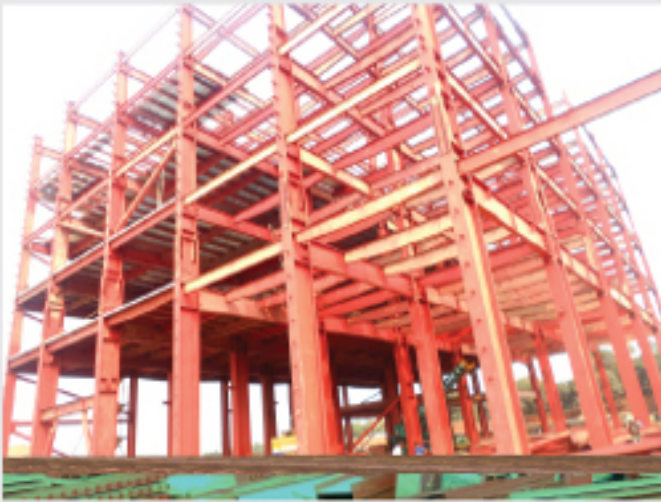
AXIS TECH is capable of expediting the progress of large or small projects. Our professional staff has professional engineering and design experience. *AXIS TECH* uses the same attention to technical detail and project management that has produced uniformly economical results for our clients.

To provide excellence in quality, service and customer satisfaction, the quality goals of our Team are to:

- ✓ Make client service our top priority.
- ✓ Ensure design quality through an attitude of prevention rather than detection.
- ✓ Encourage continuous improvement of design through engineering development, automation and improvement of project management processes.
- ✓ Provide well planned and thorough engineering designs using proven technologies.
- ✓ Produce engineering documents that are clear, concise and professional.

Quality Assurance starts with an attitude of prevention rather than detection. Because quality is defined by the client, quality assurance begins with an accurate assessment of clients' needs. We start by listening to clients' needs and objectives for the project and design accordingly.





Head Office

Hosue# 75/2, Ridge Dale (3rd Floor)
Pragati Sarani, North Badda,
Dhaka, Bangladesh.

Contract No

02-9857907
01716-324420
01190-873956

Factory

Hemayetpur, Savar, Dhaka.

E-Mail

axis.tech@yahoo.com

Web

www.axistech-bd.com